

Identifying Gifted Learners Family Information Session

April 5, 2022



Why do gifted learners need specialized services?



*Students requiring
support to master
curriculum*

**Grade level curriculum
designed for typical learner**

*Students beyond grade
level curriculum
requiring advanced
learning opportunities*

GOALS OF GIFTED EDUCATION

- Develop academic and personal potential of identified gifted learners
- Opportunities for in-depth learning, and development of critical and creative thinking skills
- Opportunities for interaction with academic peers to develop affective and leadership skills

Program and Continuum of Services

Talent
Development

Targeted Skill
Development

Small Group
Investigations

Identification Process *related to* Programs & Services

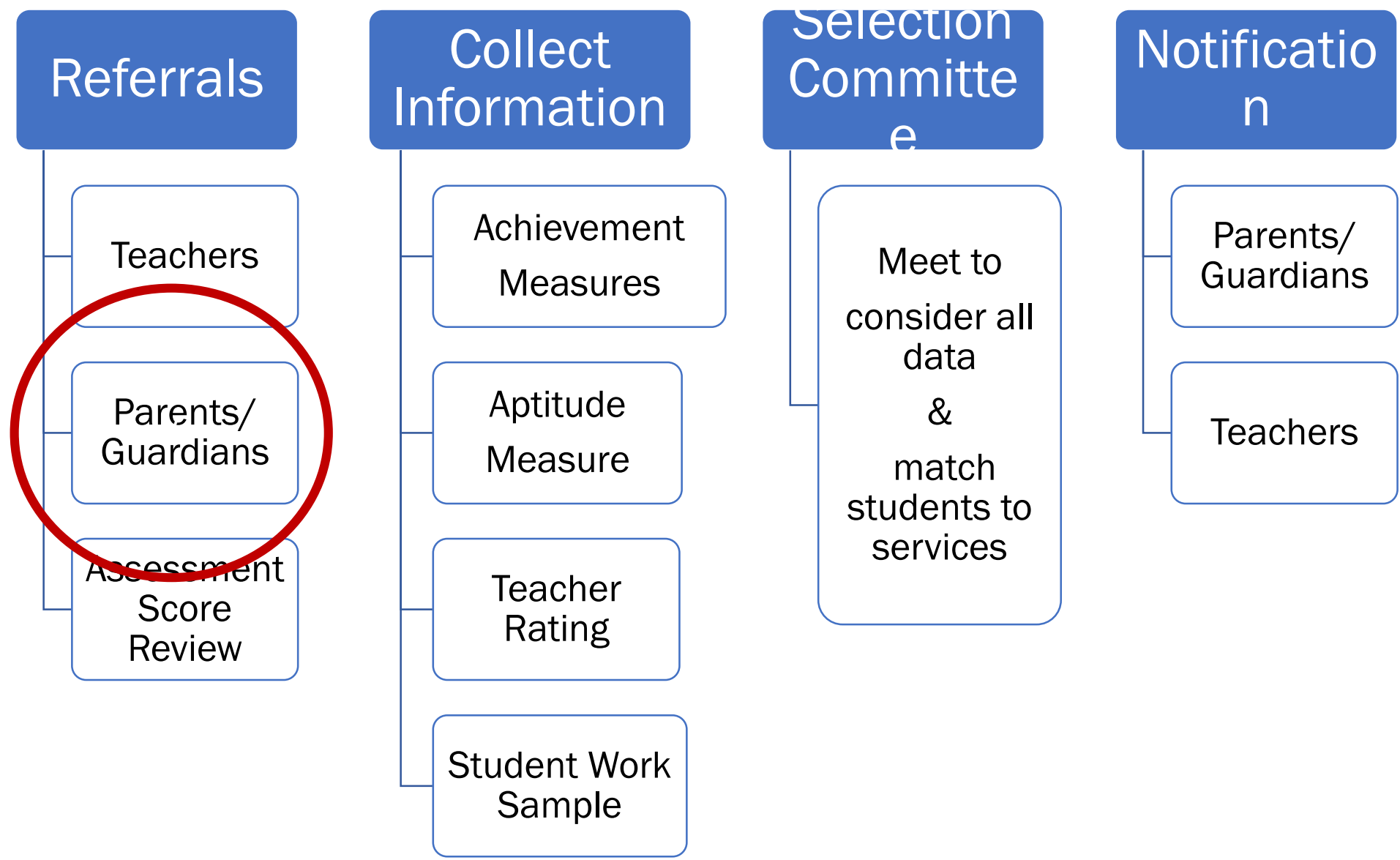
Multiple measures that are non-
discriminatory

Local Norms for best match to services

Casting a wider net to include traditionally
underrepresented gifted learners

Identifying students who require learning
experiences beyond those provided by
grade-level curriculum

Equitable Identification of Gifted Learners



ACHIEVEMENT ASSESSMENTS

- Measure information or skills that a student has learned.
- NJSLA (4-8) Renaissance Learning (K-8)

APTITUDE ASSESSMENT

- CogAT to measure cognitive ability or the *potential* to learn

TEACHER RATING SCALES

- Rate student attitude, learning and achievement behaviors in the classroom
- Learning, Creativity, Leadership and Motivation
- Standardized, validated and used successfully for many years

STUDENT WORK SAMPLE

- Opportunity to demonstrate skills and ability in area of interest/talent
- Evaluation rubric

What is the STUDENT WORK SAMPLE?

Product that sets student apart from peers.

Creative, original or clever solution to a problem or

Product/sample demonstrates ideas, skills, and/or beyond grade level expectations.

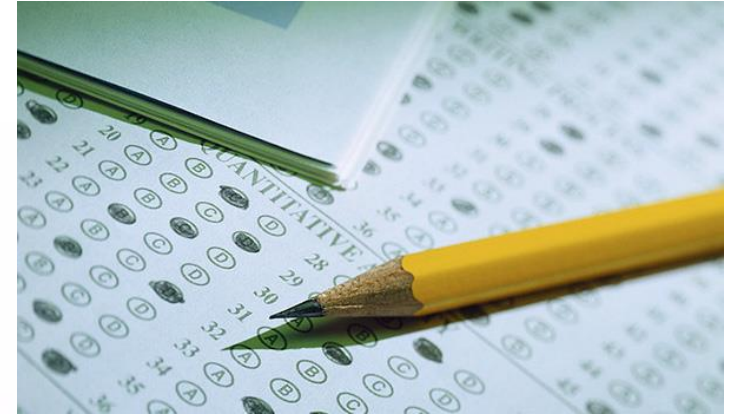
Must be completed independently by student.

No tests or group projects.

STUDENT SUPPORT COMMITTEE MEETS

- Reviews all data
- Makes recommendations for services

REFERRING YOUR CHILD



Bright or Gifted?

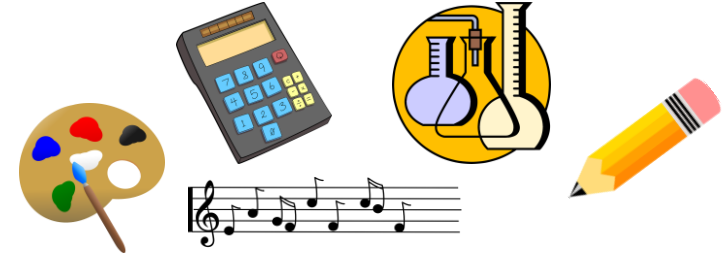


Characteristics of Gifted Learners



Rapid Learners

Highly Curious



Many Interests

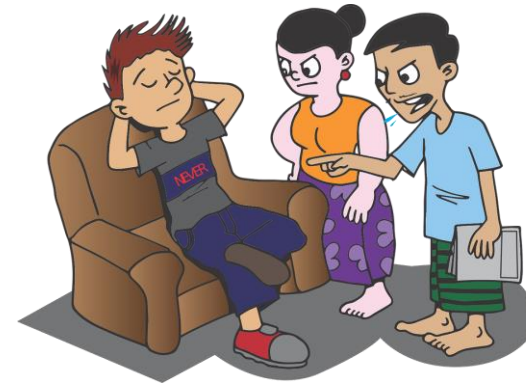
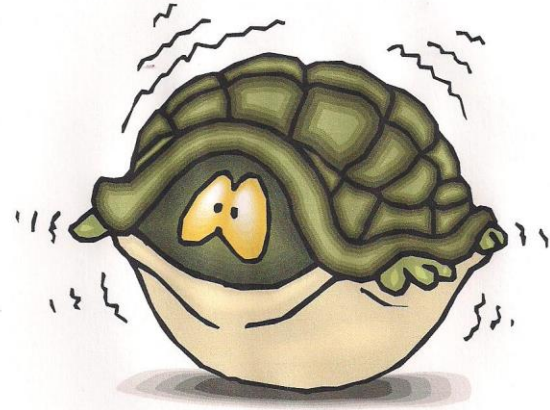
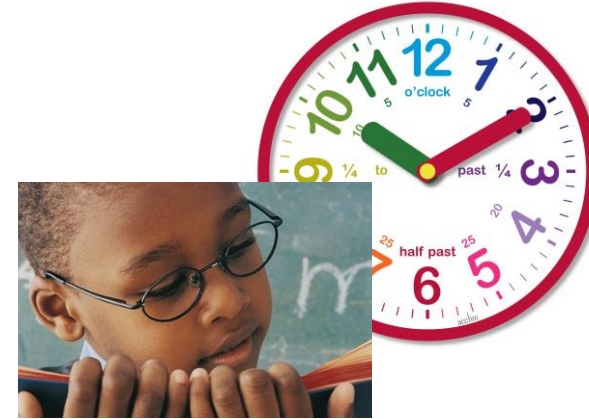


Advanced Readers and Writers

Abstract & Complex Thinkers



When abilities are left unchallenged...



OTHER CHARACTERISTICS TO LOOK FOR

Learns easily and rapidly	Heightened sense of justice/fairness
Motivation/Task Commitment	Multipotentiality
Highly curious	Individualistic and strong-willed
Works Independently	Ability to retain large amounts of information, advanced memory
Advanced sense of humor	Highly creative

Finding and Serving Under-represented Populations of Students

- ELL
- Black, Latinx, and Native American students
- Twice-exceptional



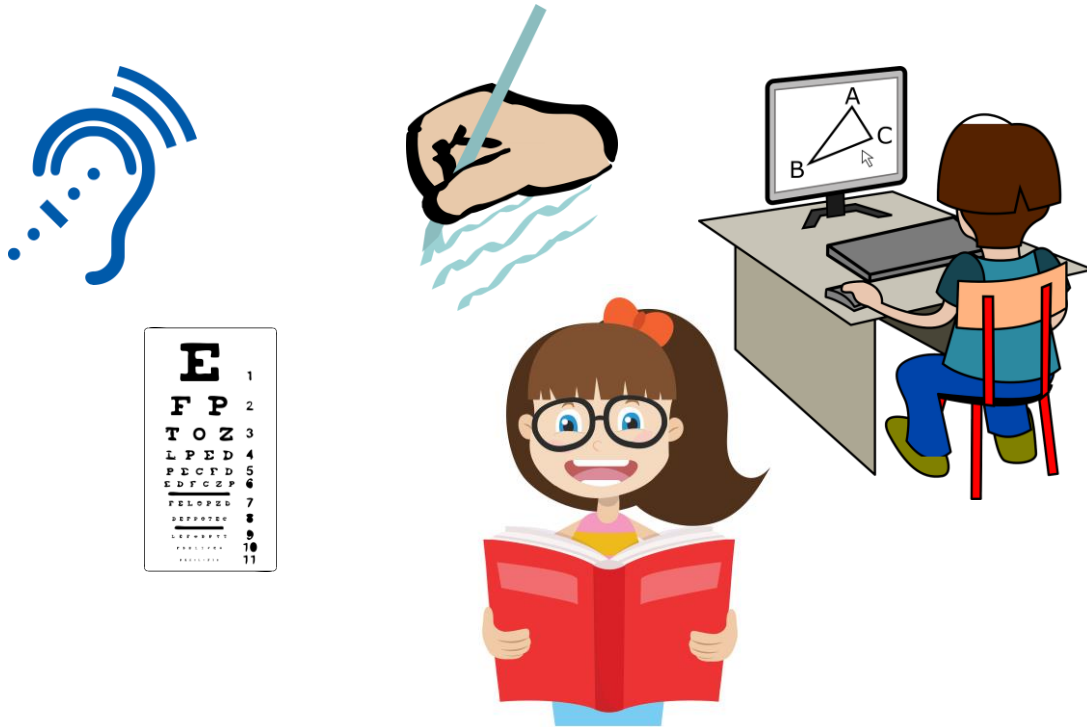
ELL Gifted Students

Giftedness may “look different” so consider these questions:

- How quickly is the ELL student acquiring English?
- How adeptly does the learner switch between languages?
- Is the student exhibiting advanced reading in native language?
- Is the student creative or shows advance problem-solving ability?
- Does the student demonstrate advanced math skills?

Twice-exceptional Learners

Learners who are gifted & have a learning/physical disability.



Masking

Learning disability may mask giftedness...

... or giftedness may mask a learning disability

How do I make a referral?

MPS Gifted and Talented Referral Form

Student Support Committee will notify parents of their recommendations for the educational options that will meet the child's needs in June.

Thank you!

Any any additional questions to this google form:

<https://forms.gle/zSnQTuPisdj4G4Yp6>